



# WAKONDA CLUB

RESTORATIVE MASTER PLAN BOOKLET

# INTRODUCTION

The Golf Vision Committee was formed to evaluate Wakonda’s golf course from the ground up and provide a clear roadmap for the future. In looking at a large-scale golf course renovation project, our priorities included making the golf course more playable and enjoyable for all levels of golfers, increasing safety on the course, increasing maintenance efficiencies, and to restore Langford and Moreau’s intended vision and strategic features. By doing this, we believe the club will return to the top of the Iowa state golf ratings.

The first step in our process was to secure a professional to steer the project and after a thorough national search of the top architects in the profession, Tyler Rae was selected. Since then, Tyler and his team have spent hours familiarizing themselves with our golf course and its history. An established Langford architecture specialist, Tyler has walked the grounds of Wakonda countless times, scouring every inch from tee to green to ultimately unearth the footprint left by Langford.

Since 1922, the routing of the golf course has remained largely unchanged from the original iteration. From a layout perspective, the only large layout modification has been the relocation of greens on Holes 2 and 9, outside of small-scale renovations over the years. While the original layout was not altered during these renovations, the nuances of the Langford and Moreau design and features have softened and, in some cases, been wiped out completely.

Moreover, the need for a new irrigation system is a paramount issue that needed to be addressed by the Club. As part of the Vision Process, our Golf Vision Committee, along with the Director of Golf, Aaron Krueger and Grounds Superintendent, Dane Wilson, set out to tackle the irrigation system project, in conjunction with the restoration of Langford and Moreau’s golf course design intent.

After over eighteen months of research, discovery, and multiple drafts, Tyler has created a Master Plan for our golf course, which is sure to intrigue in the following pages. These recommendations from Tyler will be executed upon to achieve our goal of paying homage to Langford and Moreau’s original design intentions and to recapture our position at the top of golf ratings in the state of Iowa. Finally, the Master Plan makes our Golf Course more sustainable, mapping the need for a new irrigation system, increases playability for all golfers of all skill levels and ultimately enhances the beautiful features that make Wakonda Club so unique.

## Greg Witke

*Chair of the Wakonda Golf Vision Committee*



*3D Rendering of Wakonda Club looking East from above the clubhouse*

# ARCHITECTURAL HISTORY AND EVOLUTION

*Much of this historical research has been provided by noted Langford & Moreau Historian, Dan Moore, to ensure accuracy in our restorative process.*

The origins of the Wakonda Club can be traced all the way back to 1897 when a group of locals led by Harry Polk founded the Des Moines Golf and Country Club (DMGCC) on Polk’s family land located on Grand Ave. (the house is now Herndon Hall on Drake University’s campus). The original golf course was rudimentary at best but managed to host the first two Iowa Golf Association Amateur Championships in 1900 and 1901, respectively.



*1911 photo of the Jefferson Polk Estate*

After spending six years on the Polk Estate, Warren Dickinson, the DMGCC president at the time, moved the club to a new property at the corner of University Avenue and Merle Hay Road adjacent to the Waveland Golf Course in Des Moines. The property was acquired on a 20-year lease and Golf Architect Thomas Bendelow, who is credited for designing nearly 600 golf courses throughout the world, designed the new course. The new layout, in conjunction with Waveland Golf Course, went on to host the U.S. Amateur in 1911.

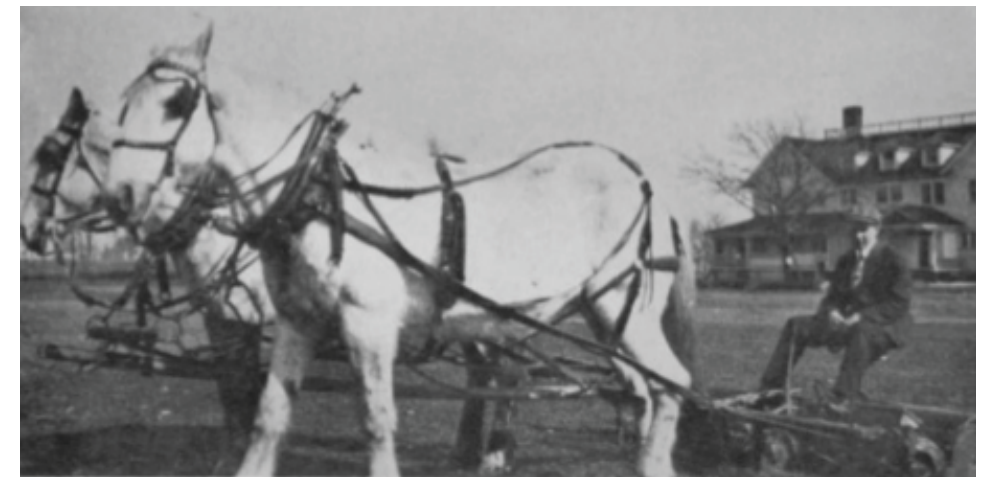


*1914 photo of the DMGCC clubhouse*

Joe Roseman, a Philadelphia-born golf professional and inventor, served as the Head Golf Professional at DMGCC from 1906-1916. He is considered the “father of the modern mower” due to his invention that tripled the efficiency of horse drawn gang mowers. He also pioneered underground irrigation on golf courses in the Midwest.

As the 20-year lease at the Waveland-adjacent property neared an end, DMGCC purchased the Hobbs Homestead (the land on which Wakonda Club now resides) in 1919. DMGCC hired Langford and American Park Builders to design and build the course on a budget of \$100,000 and construction started in 1920. However, at some point in

1921, DMGCC leadership changed direction, and started looking for a new property for the club. A group of DMGCC members subsequently purchased 147 acres of land west of the Des Moines on what was the Ashworth Estate.



*1910 photo of Joe Roseman utilizing his “Roseman Mower” at Des Moines Golf and Country Club*

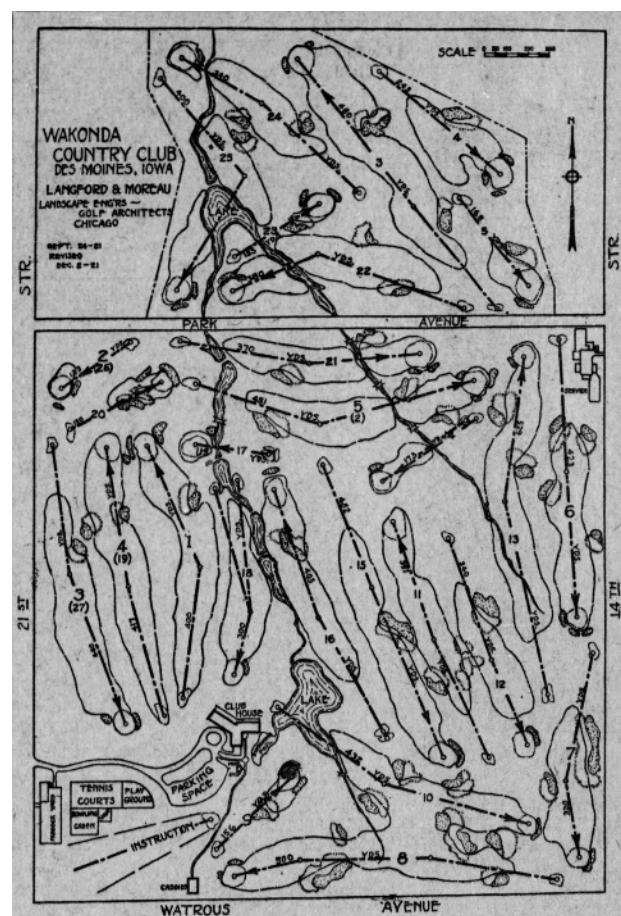


The new DMGCC golf course was designed by an unknown landscape architecture firm and Warren Dickinson, the former club president who oversaw the club's last move from the Polk Estate to the Waveland-adjacent property. While DMGCC leadership was organizing the move to the Ashworth Estate, another group of DMGCC members formed their own club, Wakonda Club, to salvage the Hobbs Homestead layout that was being built and still exists today.

The Wakonda club, organized because of the expiration in 1923 of the Golf and Country club lease, already has a membership of about 300. Other Golf and Country members are organizing a club to build a golf course and clubhouse at the west end of University avenue.

1922 Des Moines Register

The original Wakonda design called for 27 holes, but the third nine was abandoned at some point during the Great Depression. The 1920 Langford & Moreau Drawing and the 1921 Des Moines Register pencil sketch show plans for Holes #19-27 and the 1930s aerial (opposite) shows depressions that resemble bunkers north of Park Avenue, but it is hard to discern any other golf features. This aerial does show, however, Hole #20 was completed (adjacent to Hole #2) leading us to believe the third nine was finished, but abandoned.



*December 11, 1921 Des Moines Register "as-built" pencil sketch of Wakonda Club*

# COUNTRY CLUB BUYS NEW HOME ON SOUTH SIDE

Geo. B. Peak Property On  
Twenty-first Taken Over  
By Club.

**BEGIN IMPROVING  
GROUNDS AT ONCE**

The purchase of 160 acres in South Des Moines, which will be the new site for the Des Moines Country club, was announced today.

The tract purchased is located on South Twenty-first street, bounded by the city limits on the south and Park avenue on the north.

Lease on the present Country club grounds, west of Waveland park expires in 1923, and it is expected that the new site will be ready for use by that time.

Employ Landscape Artist.

W. B. Langford, nationally known architect, has contracted for the landscaping of the grounds.

The project will involve an expenditure of about \$600,000. Of this amount, \$100,000 will be spent on the course, \$250,000 on the clubhouse and other buildings. Membership will be limited to 400.

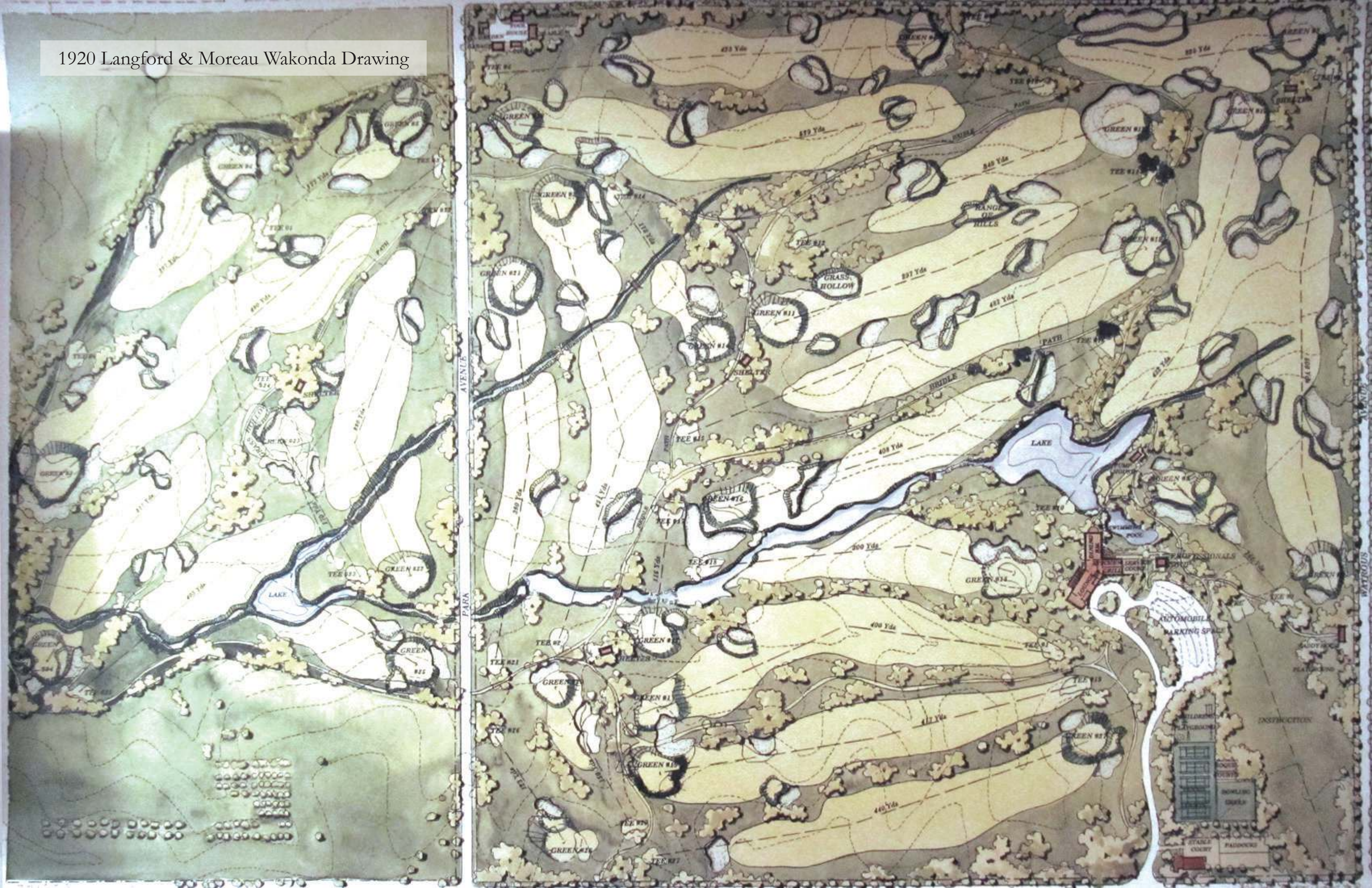
The new clubgrounds will be nearly a mile closer to the business district of the city than the present grounds.

November 1, 1919 Des Moines  
Register





1920 Langford & Moreau Wakonda Drawing





# LANGFORD & MOREAU



William Langford was an excellent golfer and played on the Yale Golf Team while earning his degree in civil engineering.

*“The prolific partnership of William Boice Langford (1887-1977) and Theodore Moreau (1890-1942) warrants recognition among the great golf course designers of golf’s Golden Age. Joining forces in 1918, Langford Moreau combined a profound appreciation of strategic golf with modern construction practices. The end result was an artistic melding of natural and constructed golf course features which provide a diversity of challenges that reward skilled and thoughtful golf.”*

- Dan Moore, Langford & Moreau Historian



Lawsonia Golf Course - Langford & Moreau (1930)  
(Photo Credit: The Fried Egg)

Civil engineers by trade, Langford & Moreau’s design style can be summarized as the blending of Golden Age design characteristics with a bold, modern flair. With their offices in Chicago and clients throughout the Midwest, the team was forced to grapple with heavier soils than their contemporaries in coastal regions. This forced the pair to explore alternative ways to move earth and arrived at the Steam Shovel, one of the earliest forms of an excavator.

Langford & Moreau’s proficiency with the Steam Shovel allowed them to create bold features at a scale no one had seen at the time. Their work can be described as maximalist as they moved significantly more dirt than other architects of the same era and often ignored any attempt to make features appear natural. However, while many of their features were and appeared to be manufactured, they were excellent routers of golf courses who maximized the natural topography while accentuating their man made features. Overall, the pair went on to design over 200 golf courses throughout the United States.

## NOTABLE COURSES

Bryn Mawr Country Club - Lincolnwood, IL  
Clovernook Country Club - Cincinnati, OH  
Culver Academies - Culver, IN  
Harrison Hills Golf & Country Club - Attica, IN (8)  
Kankakee Elks Club - Kankakee, IL  
Lawsonia Links - Green Lake, WI

Marquette Golf Club - Heritage - Marquette, MI (9)  
Millburn Country Club - Overland Park, KS  
Skokie Country Club - Glencoe, IL (8)  
Spring Valley Country Club - Salem, WI  
**Wakonda Club - Des Moines, IA**  
West Bend Country Club - West Bend, WI



Early Steam Shovel

Wakonda Club had a three-part soft opening with the swimming pool seeing use as early as September 1921.

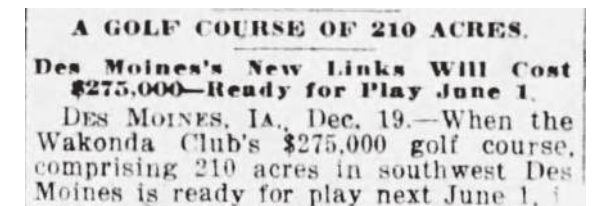


September 11, 1921 Des Moines Register



August 20, 1922 Des Moines Register

The golf course was originally slated to open on June 1, 1922 but ultimately saw its first play on July 4, 1922.

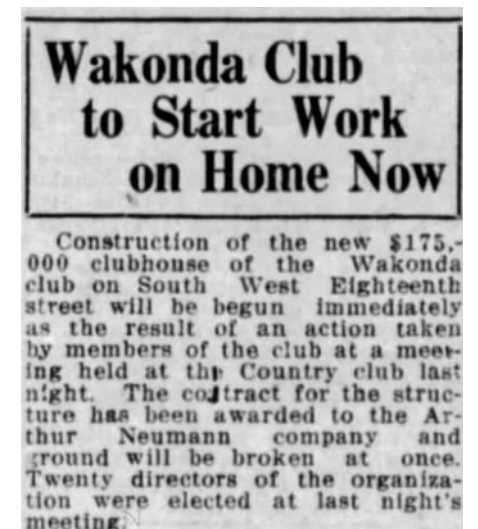


December 20, 1921 Kansas City Times

Clubhouse construction had begun in March of 1922 and the lavish new building was unveiled on December 16th, 1922 with a “pretentious social event” hosting over 500 guests.



December 17, 1922 Des Moines Register



February 24, 1922 Des Moines Register





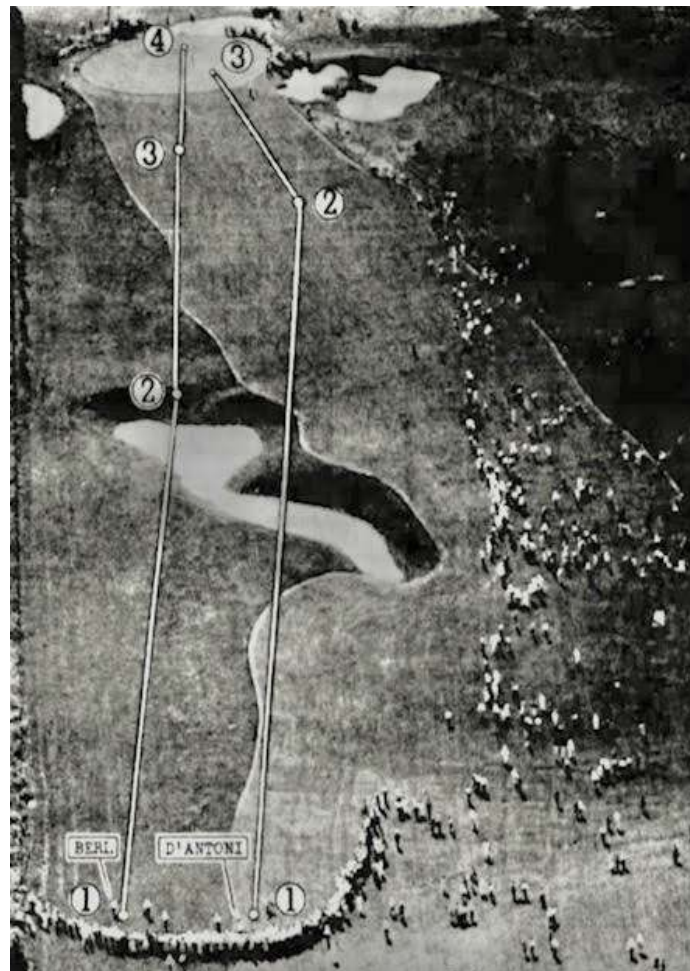
*Wakonda Clubhouse in 1922*

Since its prestigious beginnings, Wakonda has been considered one of the best golf courses in the Midwest by not only playing host to major events, but also through grounds keeping innovation. Wakonda became one of the first clubs to install an underground irrigation system on the golf course in 1930, which allowed for the premier playing conditions of the area.



*Hole #7 during the 1939 NCAA Championships*

Wakonda Club has hosted a myriad of esteemed golf tournaments, beginning with the 1939 NCAA Golf Championships.



*Hole #8 during the 1939 NCAA Championships*

Moreover, the Club has held the 1947 Western Amateur, the 1956 Women's Western Open, and, most notably, the 1963 U.S. Amateur. Ben Hogan, Walter Hagen, Arnold Palmer, Jack Nicklaus and Babe Zaharias have all been challenged by Wakonda's demanding layout and, in 2013, Wakonda Club became host of the Champions Tour's Principal Charity Classic, allowing for even more of the golf's greats to enjoy the course.



*July 1946 crowd following Ben Hogan, Jimmy Demaret, Dick Metz and Ellsworth Vines playing at Wakonda*

Our goal throughout this Master Planning process has been to honor Wakonda Club's storied past, while setting the Club up for success in its next 100 years. Many of the course's original bunkers remain untouched, covered by trees, outside of the current hole corridors. We want to bring these original features back into play and reconnect the golf course to the land on which it lies. By doing this, we will highlight the unique aspects of the course that make it Wakonda, and return the course to its rightful place as a premier layout in the Midwest.



*3D model showing the current Hole #10 at Wakonda with no trees. Note the original bunker faces that remain some 30-40 yards away from the current fairways.*

The drawings, historic photographs, newspaper articles, etc. you see here have been carefully studied and thoughtfully considered within each aspect of our design. This, in conjunction with our intense study of Langford and Moreau's style and their design intent for Wakonda, provide a clear road map to guide us towards the best possible Wakonda Club. We hope you enjoy this Hole-by-Hole Booklet detailing each aspect of our Restorative Master Plan.

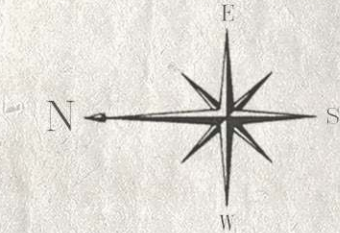
*Respectfully submitted,*

*Tyler J. Rae*  
Tyler J. Rae  
Golf Architect

*Jim Ryan Jr.*  
Jim Ryan, Jr.  
Design Associate

***Special thanks to Langford & Moreau Historian, Dan Moore, for all of his research on Wakonda Club.***





1920 Langford & Moreau Wakonda Drawing

PLAN OF  
**WAKONDA CLUB**  
DES MOINES, IOWA

~ CARD OF THE COURSE ~

HOLE	PAR	L&M	BLUE	WHITE	GOLD	RED	GREEN
1	4	438	425	408	375	341	318
2	3	170	161	144	131	107	100
3	4	456	378	365	307	301	259
4	4	442	419	396	368	310	286
5	5	592	559	505	455	435	388
6	4	419	394	386	333	284	249
7	4	375	337	323	309	260	253
8	5	560	523	500	441	354	349
9	3	154	141	126	115	100	89
OUT	36	3606	3337	3153	2834	2492	2291
10	4	488	435	380	325	316	245
11	4	456	426	384	366	348	322
12	4	393	354	337	315	277	241
13	5	553	517	496	488	388	379
14	3	226	202	174	123	112	104
15	5	512	500	468	423	415	367
16	4	473	448	418	388	292	289
17	3	197	180	155	140	116	93
18	4	323	306	291	269	236	224
IN	36	3621	3368	3103	2837	2500	2264
TOTAL	72	7227	6705	6256	5671	4992	4555

\*\*\*HOLE #7 CAN PLAY 277 yds FROM THE WHITE/GOLD TEE ACROSS THE RIDGE

\*\*\*HOLE #15 CAN PLAY 374 yds FROM THE ALT. TEE THAT SERVES AS THE DROP AREA ON HOLE #17





# Hole #1

*Par 4*

<b>L&amp;M:</b>	<b>438</b>
<b>Blue:</b>	<b>425</b>
<b>White:</b>	<b>408</b>
<b>Gold:</b>	<b>375</b>
<b>Red:</b>	<b>341</b>
<b>Green:</b>	<b>318</b>

- A. Rebuild putting green and tie it into the champ tee for Hole #1 for a seamless appearance.
- B. Shift tees right and stagger them into the hillside to improve visibility of the valley from the back tees and to better the angle for forward tee players. Build free form tees as were designed by Langford & Moreau throughout the course.
- C. Thin trees down both sides of the hole improving turf conditions and highlighting the land of Wakonda, the best feature of the club and course. Thinning trees will improve the health of specimen trees that will remain.
- D. Restore original fairway bunker to turn the hole and stop balls from running too far off line. This will provide a dramatic view off the first tee improving the overall aesthetic.
- E. Add native area to separate Holes #1 & 17. Keep grass bunker to allow for recovery shots to the 1st Green from well below the putting surface.
- F. Recapture lost green square footage to regain fun corner hole locations.
- G. Restore Langford & Moreau dual bunker between Holes #1 & #4. Run cart path through bunker with wooden planks to improve golfer flow on Holes #1, 2, 4 & 5.







# Hole #2

Par 3

L&M:	170
Blue:	161
White:	144
Gold:	131
Red:	107
Green:	100

- A. Shift tees slightly left raising them and cutting them more into the natural slope.
- B. Moving the tees left will allow for more space on Hole #5's tee shot as well as improving golfer flow on the first 5 holes. Golfers will turn right and go behind the 1st green and then continue up the left side of the 2nd hole. Players will now only have to cross from Hole #4 to Hole #5.
- C. Eliminate both existing greens and build a new green between both of their current locations that matches Langford & Moreau's style and the original drawings. Players will be able to play out to the right of the green and use the slope to kick the ball onto the green to the left.
- D. Remove trees necessary to move the green. Replant the perimeter to better screen the road and houses from golfer view. Add native to screen the cart path from the player's perspective and provide color to the golf course.





## Hole #3

*Par 4*

**L&M:** 456

**Blue:** 378

**White:** 365

**Gold:** 307

**Red:** 301

**Green:** 259

- A. Restore the original tee that plays up and out of the valley and over the restored fore bunker to recreate the dramatic tee shot for the pros.
- B. Eliminate the left tee to improve golfer flow and provide better angles of play for all players. Shift tees as far right as possible to allow for visibility of the green from the tee and a better angle of play.
- C. Add new forward tees so players can achieve the second ridge from the tee as opposed to all drives being stuck in the bottom of the valley.
- D. Shift fairway and widen significantly to the left to reincorporate the original grass bunker back into the hole.
- E. Clear trees down the left side to improve turf conditions, improve views across the golf course from a high point on the front nine, and allow for easier recovery shots from in between Holes #3 & 4.
- F. Reorient and expand putting surface back to its original design. Widen approach to allow golfers to run balls onto the green as opposed to only aerial shots. Restore greenside bunkers per the Langford & Moreau plan.
- G. Shift cart path left to accommodate new hole corridor. Add screening behind green.





## Hole #4

*Par 4*

**L&M:** 442

**Blue:** 419

**White:** 396

**Gold:** 368

**Red:** 310

**Green:** 286

- A. Shift tees slightly left and cut into the hillside to raise them and improve visibility.
- B. Recreate ridge line that has been recently saddled out for a more dramatic view from the tee, pro shop and clubhouse.
- C. Add new forward tees to allow players to play more downhill as opposed to uphill. This will make for a more enjoyable round as forward tee players will be able to reach more Par 4's in two.
- D. Clear trees on both sides of the fairway to highlight specimens and improve turf conditions. Golfers will also be able to play recovery shots off rough grass as opposed to hard-pan.
- E. Restore original approach bunkers per the Langford & Moreau plan. While these bunkers may not necessarily be in play for many players, they frame the hole and denote lines of play. Playing up over the left bunker and landing the ball short left of the green will chase balls down to right flags bringing fun ground game ideology back to the design.
- F. Widen the approach drastically to bring back the original design intent of running the ball onto the putting surface. Recapture the original green square footage and lost hole locations. Restore the original dual bunker between Holes #1 and 4.





## Hole #5

*Par 5*

**L&M:** 592

**Blue:** 559

**White:** 505

**Gold:** 455

**Red:** 435

**Green:** 388

- A. Reorient tees for both Holes #2 & 5 improving golfer flow and reducing the crossover. Wrap cart path to the left of all tees then wrap to the existing bridge in front of the yellow/red tee.
- B. Add a new tee across the pond so golfers no longer have a forced carry and can get to the top of the ridge in one.
- C. Widen fairway on both sides and clear trees necessary to do so. Replant as much as possible down the left side to screen houses from view.
- D. Restore the original right fairway bunker to increase the strategy of the tee shot. Challenging the bunker off the tee will give longer players a better angle to the green in two shots.
- E. Rebunker the second landing area so players have to think about their layup in multiple ways. Laying up short of the creek is easier, but provides a longer third shot. Carrying the creek on the layup will provide a shorter shot into the green, but is further challenged by flanking bunkers on both sides.
- F. Rebuild the green to better match the Langford & Moreau style with broad slopes. Eliminate bunkering around the green to add falloffs for short game variety.
- G. Add cart path back to the left side of the hole.





## Hole #6

*Par 4*

**L&M:** 419

**Blue:** 394

**White:** 386

**Gold:** 333

**Red:** 284

**Green:** 249

- A. Adjust back and middle tees and make free-form in nature to add tee space on a shorter Par 4. Replant around the maintenance facility to better hide it from view.
- B. Restore original fore bunkers cut into the hill-side improving aesthetics of the tee shot.
- C. Shift forward tees to the top of the ridge for better visibility and to allow for the hole to play as a Par 4 for shorter hitters.
- D. Widen fairway significantly to the right and reincorporate right bunker into the design as it now sits in the middle of the trees.
- E. Subtly regrade fairway so the valley is less severe for golfers.
- F. Replant the perimeter to screen the road and houses from view.
- G. Eliminate bunkers in front of the green to allow for ground game shots into the green. Significantly widen approach so shots just off line will deposit into the rough.
- H. Recapture lost green corners and square footage. Bring back the saving bunker behind the green so long shots are contained close to the green.



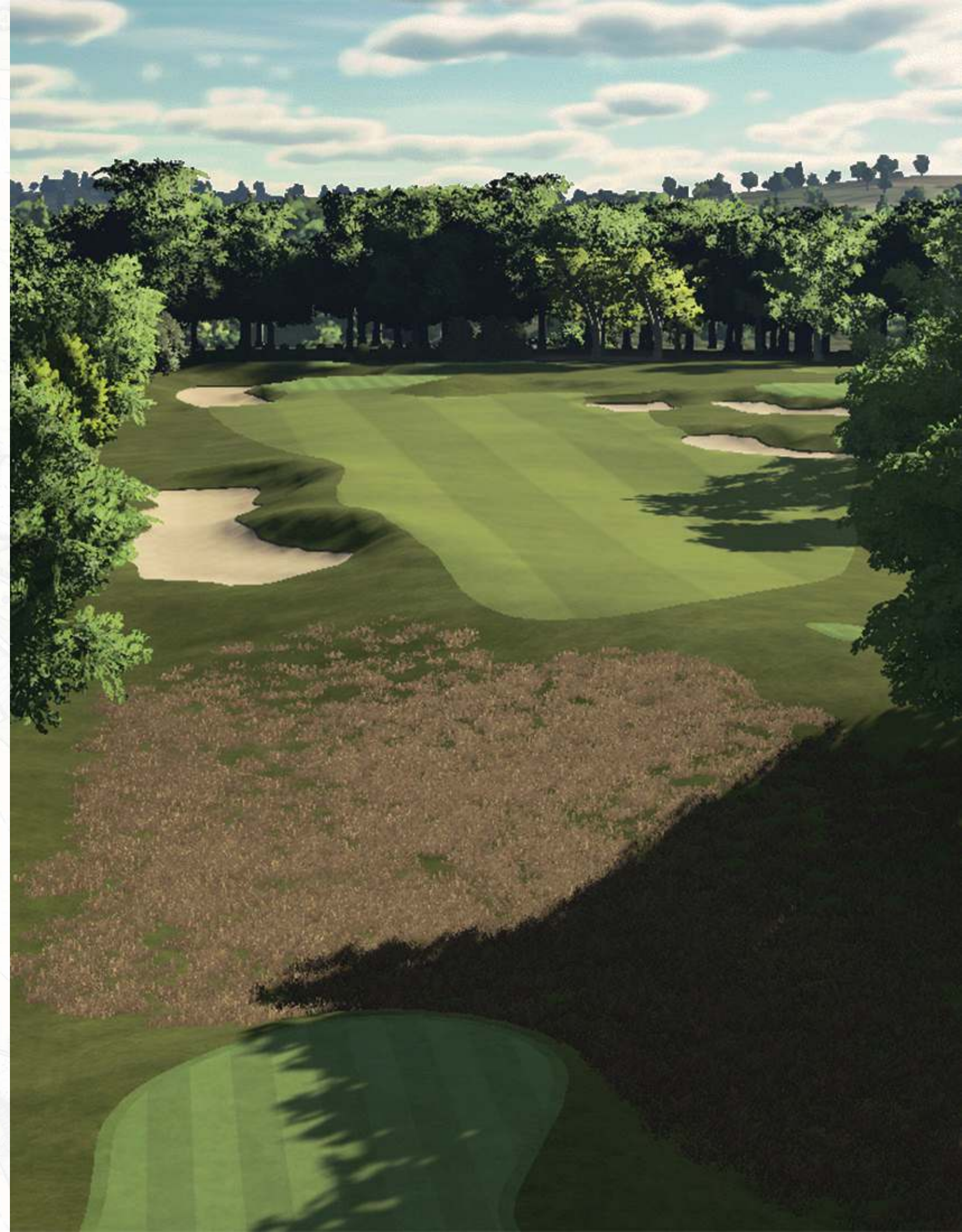


## Hole #7

*Par 4*

<b>L&amp;M:</b>	<b>375</b>
<b>Blue:</b>	<b>337</b>
<b>White:</b>	<b>323/279</b>
<b>Gold:</b>	<b>309/272</b>
<b>Red:</b>	<b>260</b>
<b>Green:</b>	<b>253</b>

- A. Reorient tees to create a drivable Par 4 with strategy & options off the tee.
- B. Expand green/red forward tee across the valley to spread out wear and tear. Add alternate tee so white/gold tee players can drive the green on alternate days. This tee can also be used as a championship tee for Club Championships to add variety on certain days.
- C. Restore width to the fairway and bring back the original scale and drama provided by the fairway bunkers. Remove trees necessary to recreate the width.
- D. Significantly plant the boundary to screen the road and homes from view.
- E. Bring back the original mounding right of the green recreating a vertical, unique hazard that doesn't exist elsewhere on the course. Playing to this alternate right corner of fairway will have an obstructed view of the green.
- F. Recapture the lost corners of the green and restore the greenside bunkering as was designed. Tie a falloff area behind the green into the Hole #8 tees creating a sense of connection between the holes and further challenging aggressive players who attack back pins.





## Hole #8

*Par 5*

**L&M:** 560

**Blue:** 523

**White:** 500

**Gold:** 441

**Red:** 354

**Green:** 349

- A. Construct free-form back and middle tees and shift forward tees right for an improved angle of play for golfers.
- B. Bring back fore bunkers to denote lines of play off the tee. Tuck forward green/red tee into the mounding around these dual bunkers.
- C. Connect fairway between Holes #8 and 10 per the Langford & Moreau drawing creating not only a dramatic visual, but also reconnecting the golf course to the amazing land.
- D. Bring back fairway bunkering in the second landing area to challenge layups and obstruct sight lines for players who choose to bail right on their tee-shots.
- E. Recreate the original greenside bunkering and swing the fairway towards the out of bounds to increase the challenge of going for the green in two. Significantly plant down the property line to screen the road and houses.
- F. Recapture the lost hole locations and fun ground game shots. Add native to create separation between the golf course and practice area. Reroute cart path accordingly.





## Hole #9

*Par 3*

**L&M:** 154

**Blue:** 141

**White:** 126

**Gold:** 115

**Red:** 100

**Green:** 89

- A. Add native area behind and to the left of tees to create separation between the round of golf and the practice facility. Adjust cart path accordingly.
- B. Greatly expand tees to reduce wear and tear. Shorten hole to provide variety in the lengths of the Par 3s on the golf course. Hole #9 now becomes the “Short” with a dramatic sight line across the golf course.
- C. Restore the original ridge that extends from Hole #8 through the short game area. Bring back the original bunker scheme per the Langford & Moreau plan.
- D. GPS scan the original green, the current short game area green, and recreate it in the location of the current Hole #9 green. Restore the greenside bunkering per the original plan. Clear trees from hillside to open up views across Hole #10 and beyond.





# Hole #10

*Par 4*

<b>L&amp;M:</b>	<b>488</b>
<b>Blue:</b>	<b>435</b>
<b>White:</b>	<b>380</b>
<b>Gold:</b>	<b>325</b>
<b>Red:</b>	<b>316</b>
<b>Green:</b>	<b>245</b>

- A. Add new championship tee atop the hill close to the current Hole #18 green for a dramatic tee shot from ridge to ridge across the pond. Clear trees necessary to do so.
- B. Clear hillside opening up views from the Hole #9 green. Cut Hole #10 tees into the hillside adding height to the tee so white/gold/red tee players are not playing severely uphill.
- C. Shift fairway significantly right and widen, connecting it with Hole #8 fairway per the Langford & Moreau drawing. Widening fairway right also brings the right fairway bunker back into play that currently lays fallow in the trees. Shifting fairway right also moves play away from Hole #16 tees and #15 green decreasing safety issues.
- D. Restore original fairway bunkering denoting lines of play on the approach for golfers who cannot get all the way to the top of the hill off the tee.
- E. Widen approach, bring back original greenside bunkering scheme, and recapture lost green square footage. With this hole playing long, the wide approach will allow for players to run the ball onto the green, but the central spine will complicate the approach for the more skilled golfer.





# Hole #11

*Par 4*

<b>L&amp;M:</b>	<b>456</b>
<b>Blue:</b>	<b>426</b>
<b>White:</b>	<b>384</b>
<b>Gold:</b>	<b>366</b>
<b>Red:</b>	<b>348</b>
<b>Green:</b>	<b>322</b>

- A. Add new championship tee as far back as safely possible close to the Hole #10 green. Shift all other tees slightly left for improved angle.
- B. Restore fore bunkers increasing the drama of the tee shot. Peel back layers of trees that truncate the tee shot and restore the width to the fairway. The fore bunkers off the tee will now provide a claustrophobic feeling off the tee, but the fairway will be much wider behind them than it appears.
- C. Clear ridge line between Holes #11 and 15 and bring back dual bunkering between the two holes that currently exists in the trees.
- D. Restore the approach bunker cut into the ridge on the left. Challenging the approach bunker and landing just on it's back side will allow for players to trundle the ball down onto the green.
- E. Adjust fairway line to incorporate the grass hollow back into the approach.
- F. Recapture the lost corners of the putting surface. Widen approach to allow for the fun ground game shot that can be played off the ridge short left of the green.





## Hole #12

*Par 4*

**L&M:** 393

**Blue:** 354

**White:** 337

**Gold:** 315

**Red:** 277

**Green:** 241

- A. Utilize excess material from construction to build up a new championship tee to add length to the hole. Expand middle tees for variety in length and to spread out wear and tear on a short par 4.
- B. Restore the left fore bunker to obstruct the view of the true width of the fairway. Tuck new green tee behind this bunker so green tee players can get over the ridge and potentially reach the green in two.
- C. Clear trees to uncover the “Range of Hills” shown on the Langford & Moreau plan.
- D. Widen fairway left so players can play over the fore bunker to get a better angle to right pins. However, when conditions are firm, the slope of the fairway may make the fairway play skinnier than it appears.
- E. Create the dramatic, wrapping bunker as shown on the original Langford & Moreau drawing. Use wooden planks (as used on Hole #1 & 4) for green access.
- F. Recapture lost green square footage so certain hole locations require golfers to play to specific parts of the fairway for optimal angles to the hole location that day.







## Hole #13

*Par 5*

<b>L&amp;M:</b>	<b>553</b>
<b>Blue:</b>	<b>517</b>
<b>White:</b>	<b>496</b>
<b>Gold:</b>	<b>488</b>
<b>Red:</b>	<b>388</b>
<b>Green:</b>	<b>379</b>

- A. Add new championship tee and slightly stagger middle tees to allow for a view down into the valley from back tees.
- B. Shift forward red/green tee left and raise it by cutting tee into the hillside. Shift cart path closer to this tee for ease of access as well as getting the cart path out of the cone of vision from tees atop the hill.
- C. Restore containment bunker in the hillside to keep errant shots from running in front of the 6th green and to add visual interest from the Hole #13 tee.
- D. Widen fairway significantly on both sides and clear trees to accomplish this. Restore right fairway bunker to obscure vision of players trying to take the most direct line to the green. Playing left will allow for golfers to see the flag but will require longer shots to the green.
- E. Restore bunkers left of the layup area to complicate second shots for better players requiring them to hit a fade off a draw lie. These also serve to contain balls from running down the hillside to Hole #14 tees or Hole #5 green.
- F. Recapture lost right front corner of the green and tie the green into the new fairway area right of the green. Players can play significantly further right than it appears offering a visual trick.





## Hole #14

*Par 3*

<b>L&amp;M:</b>	<b>226</b>
<b>Blue:</b>	<b>202</b>
<b>White:</b>	<b>174</b>
<b>Gold:</b>	<b>123</b>
<b>Red:</b>	<b>112</b>
<b>Green:</b>	<b>104</b>

- A. Add new back tee and reshape middle tees to match free-form nature throughout the course and move them away from the Hole #5 fairway. Greatly enlarge forward tee to spread out wear and tear.
- B. Shift cart path left of the middle and forward tees to get it out of the cone of vision of golfers and improve the aesthetic from the tee.
- C. Restore the original bunker scheme and regrade fairway slightly to keep balls left short of the green from running all the way to the bottom of the hill.
- D. Bring back the original green shape and lost hole locations. Add punchbowl/kicker slope around the left side and back of the green to funnel shots towards the flagstick.





## Hole #15

*Par 5*

**L&M:** 512

**Blue:** 500

**White:** 468

**Gold:** 423

**Red:** 415

**Green:** 367

- A. Create dual tee for Holes #15 & 17 to maximize length on both holes.
- B. Enlarge existing forward tee and add a new green tee so the hole plays as a three shot hole for more forward tee players.
- C. Clear ridge line between Holes #15 & 11 to bring the dual bunker back into play. Expand fairway greatly to match the location of these hazards and provide different lines of play off the tee.
- D. Add bunker in the shape of the existing grass bunker that is cut into the hillside without sand, but in a new location to challenge layups on this short par 5. This will also force players away from the Hole #16 tees.
- E. Reconstruct the original green in a location slightly further left than the existing green to get play further from Holes #10 & 16. Restore the original greenside bunkering scheme.





## Hole #16

*Par 4*

<b>L&amp;M:</b>	<b>473</b>
<b>Blue:</b>	<b>448</b>
<b>White:</b>	<b>418</b>
<b>Gold:</b>	<b>388</b>
<b>Red:</b>	<b>292</b>
<b>Green:</b>	<b>289</b>

- A. Add a new championship tee for added length and cut a gold tee into the hillside so players can reach the green in two shots.
- B. Soften severe ridge line to create more visibility of the fairway from the tee.
- C. Widen fairway on both sides but keep a 3-5 yard strip of rough to keep shots from running from the middle of the fairway into the creek.
- D. Restore original cross bunker, but construct similar to how they are shown in the 1930 aerial to allow water to pass between.
- E. Bring back the square nature of the green and lost green square footage. Widen approach to reincorporate the water into the design. Add kicker slope on the hillside so golfers can work the ball towards the flagstick. Players who hit it closer to the creek off the tee will get the best angle into the right hole locations and have a backstop of kicker slope, while players who shy away from the creek will have a blind second over the restored cross bunkers.



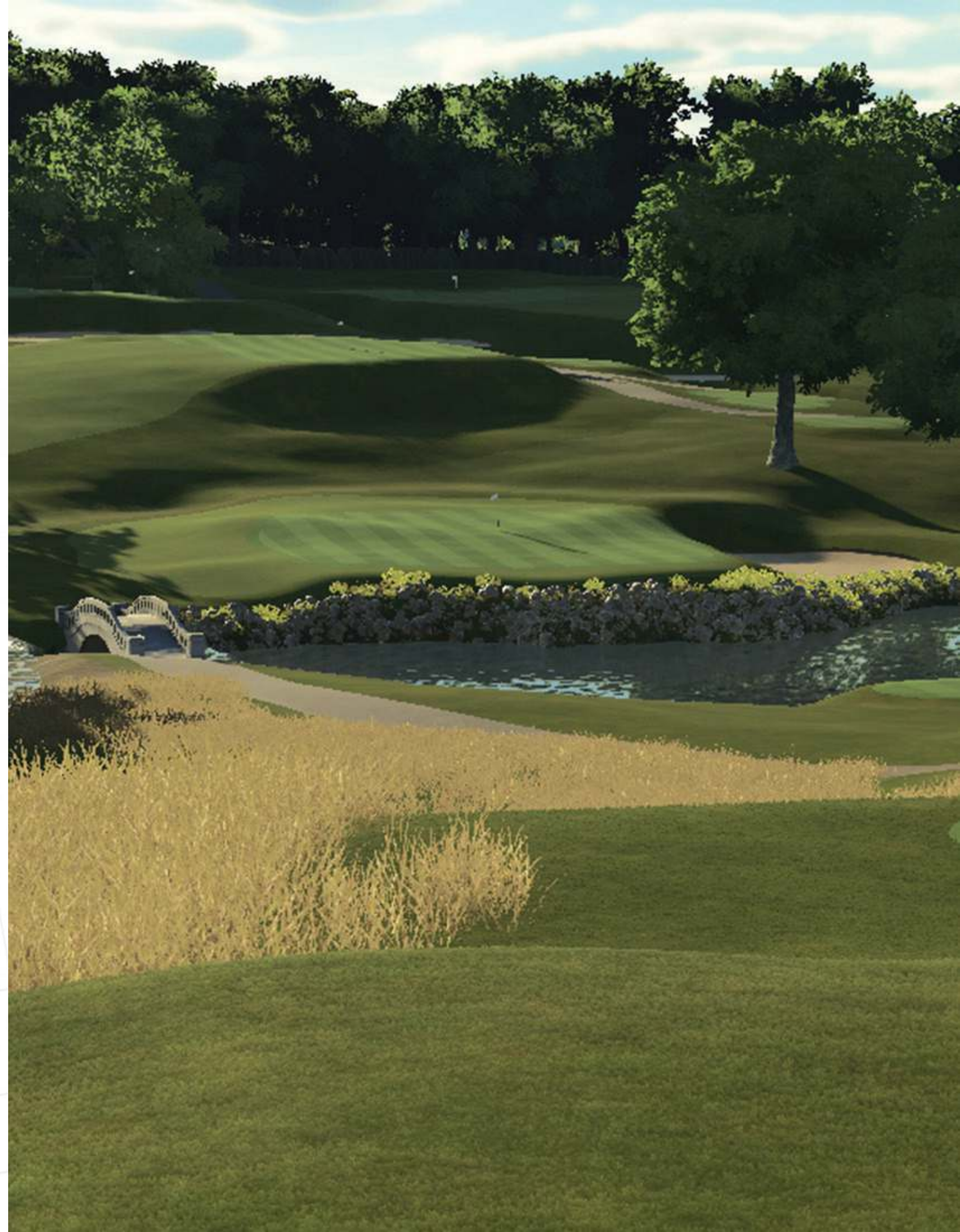


## Hole #17

*Par 3*

<b>L&amp;M:</b>	<b>197</b>
<b>Blue:</b>	<b>180</b>
<b>White:</b>	<b>155</b>
<b>Gold:</b>	<b>140</b>
<b>Red:</b>	<b>116</b>
<b>Green:</b>	<b>93</b>

- A. Create dual tee for Holes #17 & 15 to maximize length on both holes.
- B. Stagger tees down hillside for visibility from the back tees and to create variety in the length of the Par 3's from all tees. Add native to add texture to the view from the tee shot.
- C. Add new forward tee so green tee players can achieve the forced carry over the pond. Adjust cart path accordingly.
- D. Add a drop area to spread out wear and tear. *See Hole #18 notes for more info.*
- E. Construct new green and add new greenside bunkering inspired by Langford & Moreau holes that never got built at Wakonda and other holes throughout the country. The new hole will now match the rest of the golf course in playability, style, and appearance.
- F. Add fairway around the left and back of the green to challenge golfers who try to club up to avoid the water entirely. Recovery shots will be more difficult for skilled golfers as high shots are harder from the fairway, but lesser skilled golfers can putt the ball from off the green.





## Hole #18

*Par 4*

 <b>L&amp;M:</b>	<b>323</b>
<b>Blue:</b>	<b>306</b>
<b>White:</b>	<b>291</b>
<b>Gold:</b>	<b>269</b>
<b>Red:</b>	<b>236</b>
<b>Green:</b>	<b>224</b>

- A. Utilize drop area on Hole #17 as a championship tee for tournaments with limited play.
- B. Reconstruct pond banks to allow for Hole #18 tees to play from the right side of the pond as opposed to being wedged between Hole #16 green and the water. Adjust cart path to the right of the new tees drastically improving golfer flow from Holes #16 thru 18.
- C. Add new forward tees so the hole plays as a short par 4 for all players.
- D. Widen fairway to provide options off the tee. Add a deep bunker cut into the ridge on the right side of the fairway to make golfers decide to either layup or challenge the bunker off the tee for a shorter shot to the green.
- E. Selectively thin trees on the hillside left of the fairway to open up views of the rest of the golf course from both Hole #18 and the clubhouse.
- F. Re-expand green to restore all original hole locations. Construct dramatic greenside bunker per the Langford & Moreau plan to challenge golfers who play away from the right fairway bunker off the tee.
- G. Wrap fairway around the entirety of the green connecting it to the land and allowing for a variety of tee shot lengths off every tee.

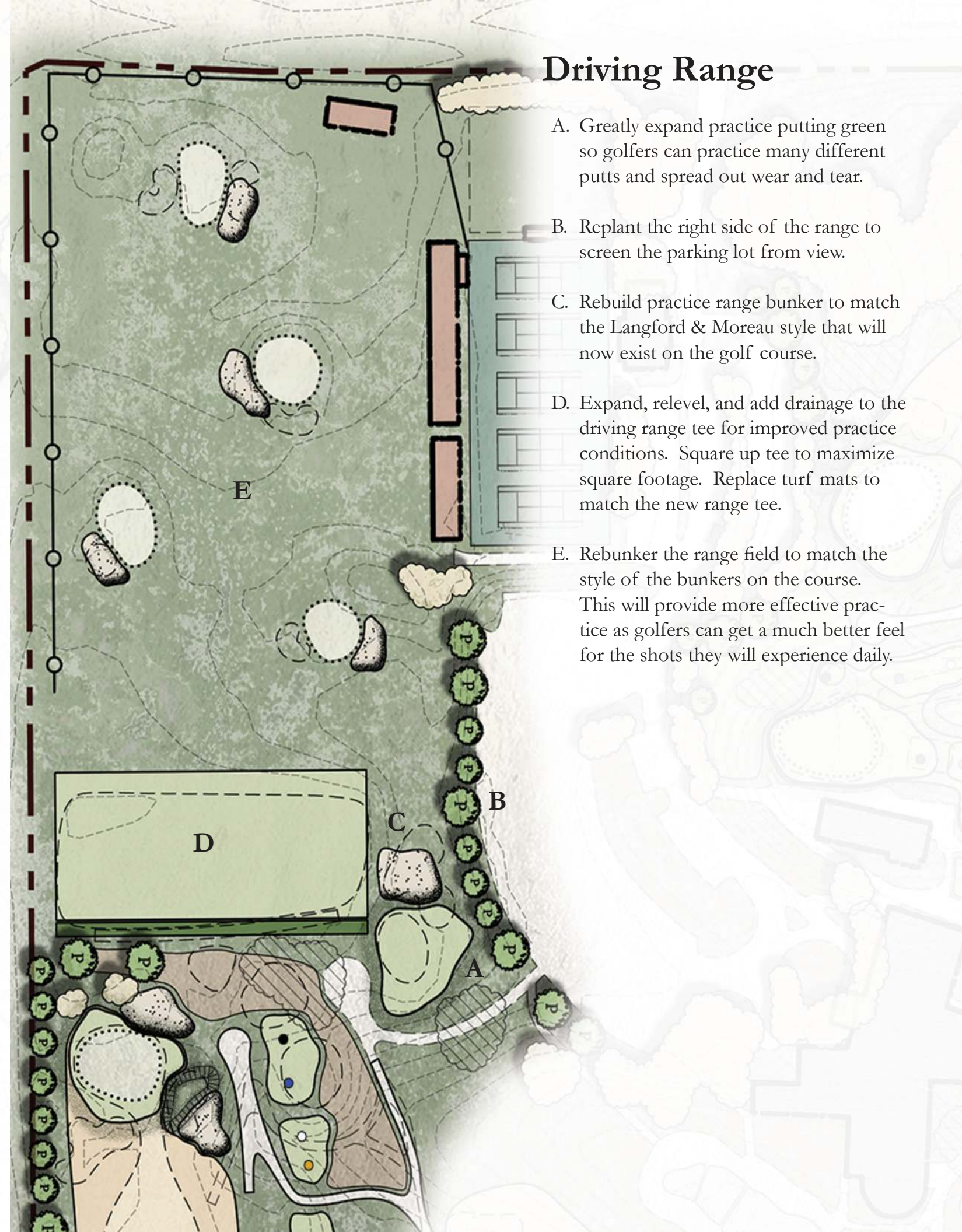






## Short Game Area

- A. Eliminate cross bunker that receives limited use and expand fairway to allow golfers to hit short shots of varying length.
- B. Rebuild left greenside bunker to match the style of Langford & Moreau and drastically increase square footage to allow for better instruction.
- C. Widen fairway short and right so golfers can practice greenside tight mow shots. Eliminate bunker to do so.
- D. Expand green back to it's original dimensions to spread out wear and tear.
- E. Remove trees that overhang the green to drastically improve turf conditions.



## Driving Range

- A. Greatly expand practice putting green so golfers can practice many different putts and spread out wear and tear.
- B. Replant the right side of the range to screen the parking lot from view.
- C. Rebuild practice range bunker to match the Langford & Moreau style that will now exist on the golf course.
- D. Expand, relevel, and add drainage to the driving range tee for improved practice conditions. Square up tee to maximize square footage. Replace turf mats to match the new range tee.
- E. Rebunker the range field to match the style of the bunkers on the course. This will provide more effective practice as golfers can get a much better feel for the shots they will experience daily.



**Tyler J. Rae**  
*Golf Architect*

**Jim Ryan, Jr.**  
*Design Associate*

March 16th, 2022